

Acute Pulmonology



Support for Local Providers and Nursing Staff

Board certified experts in pulmonary and critical care medicine available 24/7/365 for acute inpatient consultation and ongoing patient rounding.



Physician and Patient Satisfaction

Ongoing patient care rounding ensures pulmonary specialty service continuity. Patients benefit from receiving specialty care close to home.

Expert Care. Close to Home.



Bottom Line Improvement

Hospitals retain inpatient and ancillary revenue lost to transfers. Acute services have been shown to retain a high percentage of patients in their local hospital.

Solution Spotlight



Solutions are available for facilities of all sizes, including ICU coverage



Flexible coverage options available from overnights to 24/7/365



Telemedicine technology allows providers to assess, diagnose and manage patient care.



Pulmonary care is provided in collaboration with local medical and nursing staff



Care is provided for wide range of acute pulmonary conditions

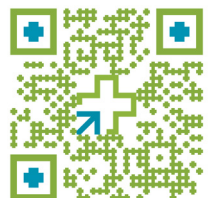


Documentation and order entry in the local medical record



Additional services available, including PFT reads, sleep program directorship, outpatient clinic and lung nodule clinic

“Patients and family members comment that they are impressed with this service. They are thankful to have this level of expertise available locally...”

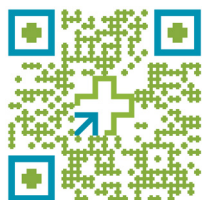


Your Partner in Innovative Care

Teledigm Health and Bryan Telemedicine offer the region's most trusted medical partners to provide telemedicine, inpatient and specialty consultations as well as specialized medical support services.

Our services offer:

- Evidence-based, best practice medical consultations and patient care
- Personable, patient focused physicians and health care professionals to provide the best possible communication, trust and care
- A secure, reliable and easy-to-use HIPAA compliant audio/video telemedicine platform
- Flexibility to fit the needs of facilities of all sizes
- Cost effective solutions for physician coverage and service expansion opportunities



Learn More

Together we can provide innovative, personalized solutions to benefit your community.

Services Available

Experienced, board-certified health care providers offer:

Acute/Inpatient services in:

- Hospitalist
- Infectious Disease
- Mental Health Emergency Department Assessments
- Nephrology
- Neurology & Stroke
- Nutrition & Dietary Services
- Pulmonary/Critical Care
- Psychiatry
- Speech Therapy

Outpatient clinics for:

- Counseling
- Dermatology
- Endocrinology
- Nephrology
- Neurology
- Psychiatry
- Pulmonology
- Rheumatology
- Others

Additional services include:

- Infectious Disease physician-led Antibiotic Stewardship
- Pharmacy support for medication review to comply with Federal and State regulations
- Dietary program support consultants
- Medical staff peer review support

“Utilizing telemedicine is bridging the gaps in services that we have not had access to previously...”